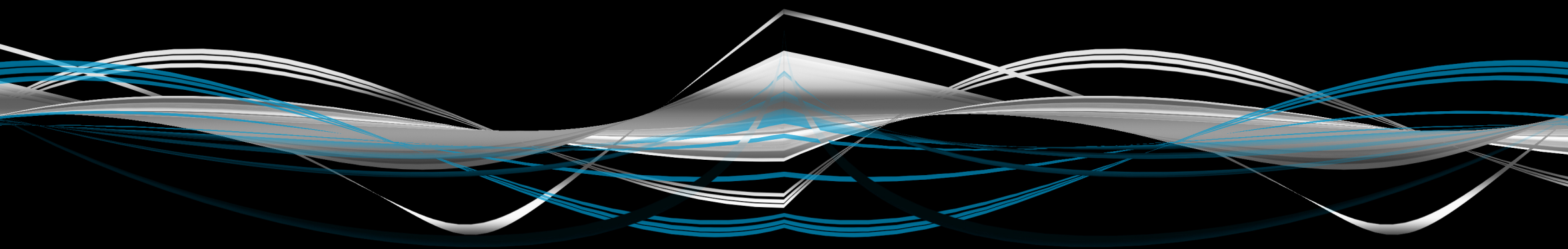


KLARIONLED
displays+signage

SOLARISLED



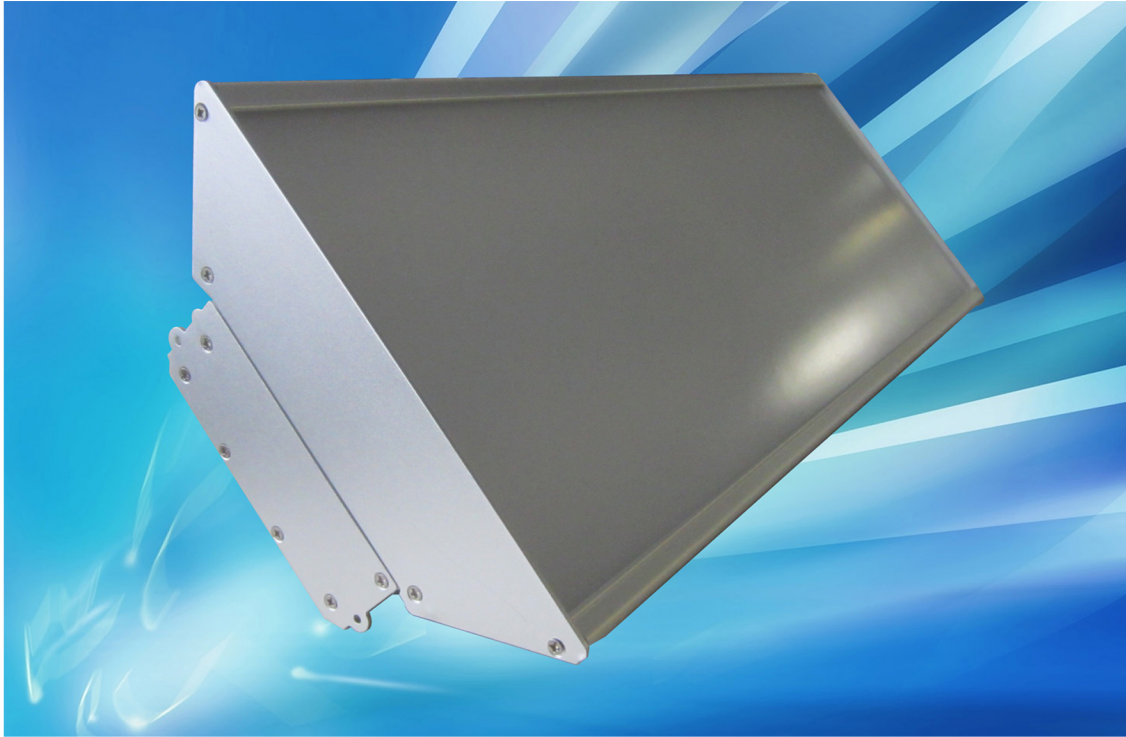
www.klarionled.com

www.solarisled.ca

Phone // 905.228.0095
Fax // 905.682.7800
E-mail // info@solarisled.ca
E-mail // info@klarionled.com

SOLARIS LED INC.
76 Geneva Street
St. Catharines, ON
L2R 4M8 Canada

The New Standard In Lighting



The Perfect Replacement For A
Fluorescent Tube Fixture Base

Model	Voltage	Wattage	Length	CCT
SL-2T130040W4K	100-240V	40W	2'	4,000K
SL-2T13040W55K	100-240V	40W	2'	5,500K
SL-4T13060W4K	100-240V	60W	4'	4,000K
SL-4T13060W55K	100-240V	60W	4'	5,500K
SL-4T13090W4K	100-240V	90W	4'	4,000K
SL-4T13090W55K	100-240V	90W	4'	5,500K

LED Flood Lights



DESIGNLIGHTS
CONSORTIUM



5 YEAR
WARRANTY

Model	Voltage	Wattage	Lumens	CCT
SL-FL10W52KBL	100-240V	10W	727 lm	5,200K
SL-FL35W52KBL	100-240V	35W	2,593 lm	5,200K
SL-FL50W52KBL	100-240V	50W	3,906 lm	5,200K
SL-FL80W52KBL	100-240V	80W	6,119 lm	5,200K
SL-FL120W52KBL	100-240V	120W	11,644lm	5,200K

Telephone: 905.228.0095 | Fax: 905.682.7800

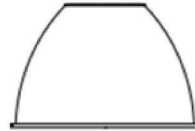
SOLARISLED

www.solarisled.ca

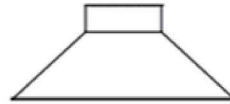
LED Low Bay / High Bay



SHADES/HOODS



45° Beam Angle

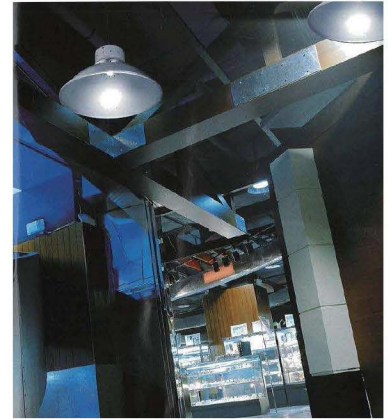


90° Beam Angle



120° Beam Angle

Available in Aluminum
or Transparent Acrylic



Model	Voltage	Wattage	Lumens	PF	CCT
SL-HB150WML	100-240/277V	150W	12,000lm	0.95	5,000K
SL-HB150W347VML	347V	150W	12,000lm	0.95	5,000K
SL-HB200WML	100-240/277V	200W	17,000lm	0.95	5,500K
SL-HB200W347VBL	347V	200W	17,000lm	0.982	5,000K



DESIGNLIGHTS
CONSORTIUM



RoHS
Compliant

5 YEAR
WARRANTY

Telephone: 905.228.0095 | Fax: 905.682.7800

SOLARISLED

www.solarisled.ca

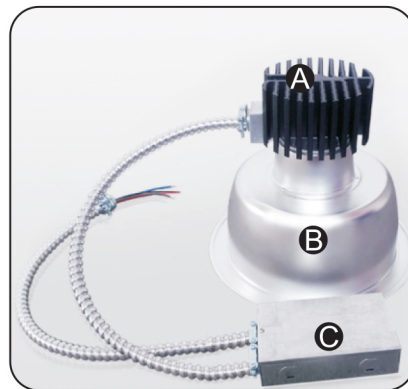
6" + 8" LED Commercial Downlight



Model	Voltage	Wattage	Lumens	CCT
SL-C6DL23W4KOL	100-277V	23W	1,750 lm	4,000K
SL-C8DL33W4KOL	100-277V	33W	2,560 lm	4,000K

Retrofit Kit Contents

- Ⓐ Engine and Light Source
- Ⓑ Reflector
- Ⓒ LED Driver Box
- Ⓓ User Manual



5 YEAR WARRANTY



13W 6" LED Downlight Retrofit



Model	Voltage	Wattage	Lumens	PF	CCT
SL-DL13W27KOL	120V	13W	960lm	>0.9	2,700K
SL-DL13W4KOL	120V	13W	1,020lm	>0.9	4,000K



RoHS
Compliant

5 YEAR
WARRANTY



LED PAR Lamp Series



8W PAR 20
Replaces
50W Halogen

13W PAR 30
Replaces
75W Halogen



17W PAR 38
Replaces
120W Halogen

Model	Lamp	Voltage	Wattage	Lumens	PF	CCT
SL-P208W3KML	PAR20	120V	8W	550lm	0.95	3,000K
SL-P3013W3KM	PAR30	120V	13W	820lm	0.95	3,000K
SL-P3817W3KML	PAR38	120V	17W	1,300lm	0.95	3,000K

*All lamps feature a 40° beam angle



RoHS
Compliant

5 YEAR
WARRANTY



High Power MR16 + GU10 LED Lamps

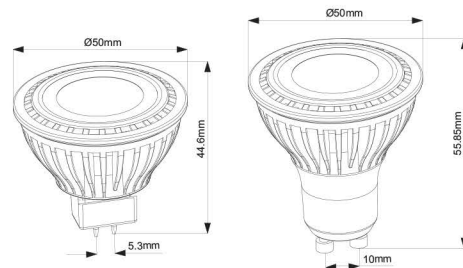
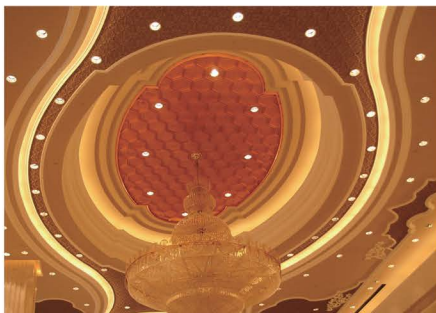


Features

- CREE X-LAMP Technology
- Consumes only 5W to replace 35W halogen or incandescent lighting
- Retrofits vast majority of MR16 shape fixtures
- Available in accurate beam angle of 40°
- Outstanding thermal solution allows for usage in commercial application
- Reliable 30,000 hours lifetime
- UL Listed and Manufactured under ISO 9001

Benefits & Applications

- Environmental friendly - No mercury or Lead
- 80% energy saving compared to halogen lamps
- Maintenance free operation
- Suitable for accent and general lighting (e.g. Lobby , Shops and Reception areas)



7W A19 LED Bulb



Energy Efficiency

Estimated Lighting Costs Using a Standard 60W Incandescent A19			
Present Wattage	60	W	
×Annual Operating Hours	3,650	hrs	
	=	219,000	Watts per year
+1,000	=	219	KWh per year
×KWh rate of	\$0.10	=	\$21.90 per year
×100 lamps per Space	=	\$2,190	annual energy cost per Space

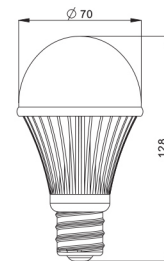
Estimated Lighting Costs Using 7W A19 Lamp			
Present Wattage	7	W	
×Annual Operating Hours	3,650	hrs	
	=	25,550	Watts per year
+1,000	=	25.55	KWh per year
×KWh rate of	\$0.10	=	\$2.56 per year
×100 lamps per Space	=	\$256	annual energy cost per Space

Total Estimated Annual Energy Savings = \$1,935

* Based on 100 lamps per space operating at 3,650 hours per year.

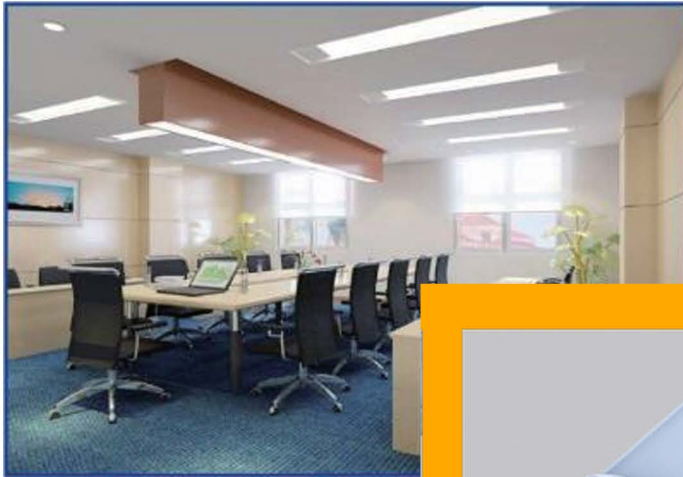
This energy saving shows an application of 100 lamps in a space currently using 60W incandescent A19 bulbs, operating 3,650 hours per year (10 hours a day) at a cost of \$0.10 per kWh. **

By replacing 100 incandescent 60W bulbs with Solaris LED 7W A19 bulbs, you will benefit from significant energy savings of more than \$1,935 per year!



Model	Voltage	Wattage	Lumens	PF	CCT
SL-A197W27KML	120V	7W	520lm	0.93	2,700K
SL-A197W6KML	120V	7W	550lm	0.93	6,000K

18W 4' LED T8 Tube



Model	Voltage	Wattage	Lumens	Angle	CCT
SL-T818W4F5K	100-277V	18W	4,076lm*	150°	4,000K

***Lumen output based on 3 lamp kit**





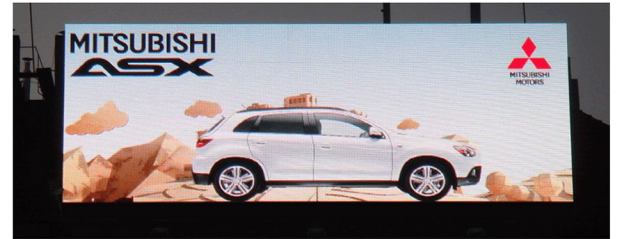



Telephone: 905.228.0095 | Fax: 905.682.7800

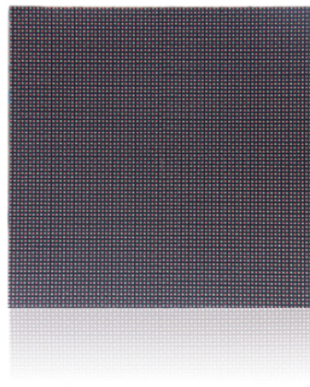
SOLARISLED

www.solarisled.ca

OUTDOOR / INDOOR LED DISPLAYS



Ideal For: Advertising Billboards / Pylon Signs
Retail / Shopping Displays
Stage Events / Concerts



THE BEST RESOLUTIONS IN THE INDUSTRY